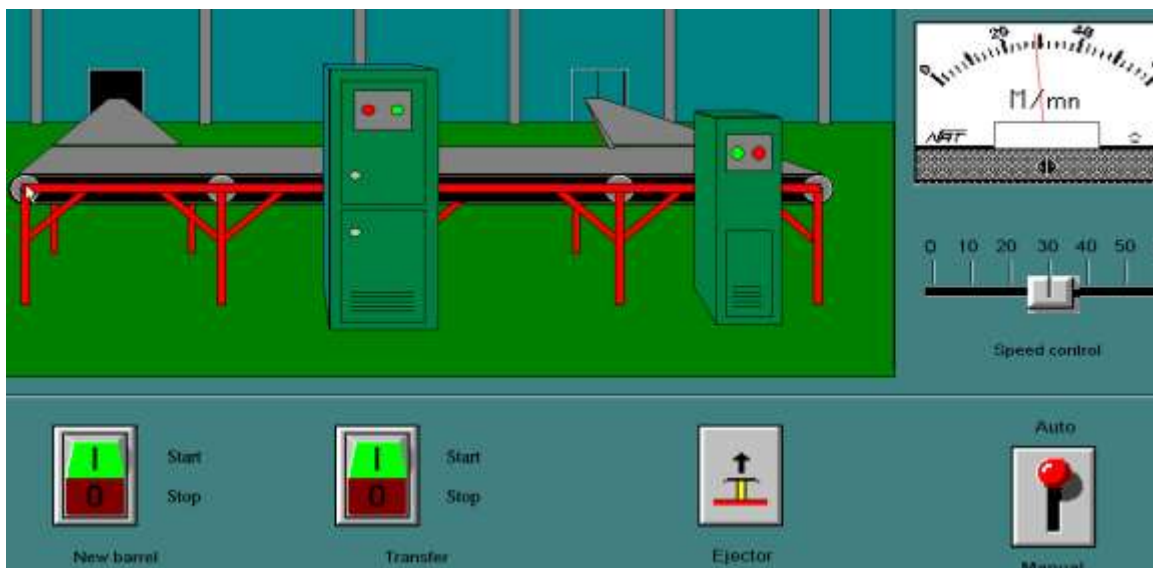


PLC220 M8 Student Lesson 2



Application Publisher

Application Publisher

Lesson Objective

By the end of this session, students should be able to:

1. Export / Publish an InTouch application.
2. Expand a Published Application
3. Find Application In Application Manager

	<u>Page</u>
Introduction to Application Publisher.....	3
Publish An Application	5
Find An Application in Application Manager	9
Exercise for Lesson A9.....	11
Exercise for Lesson A9.....	12

Application Publisher

Using Application Publisher, you can create a compressed, self-extracting package file that contains all relevant files and setup procedures to install an InTouch application on another computer.

You use Application Publisher to publish stand-alone InTouch applications.

You have two options to publish applications:

Run-time only. A run-time only package includes the files needed to run the application, but not to edit the application.

Design-time and run-time. A design-time and run-time package includes all files needed to edit and run the application.

You can post published applications to a web server where they can be downloaded and installed. The following package information is included for published applications:

- Package description
- Publisher name
- Published file name (executable)

1. Select Application Manager from the computer desktop.



Figure 1-A

From Application Manager double click on a application to be opened

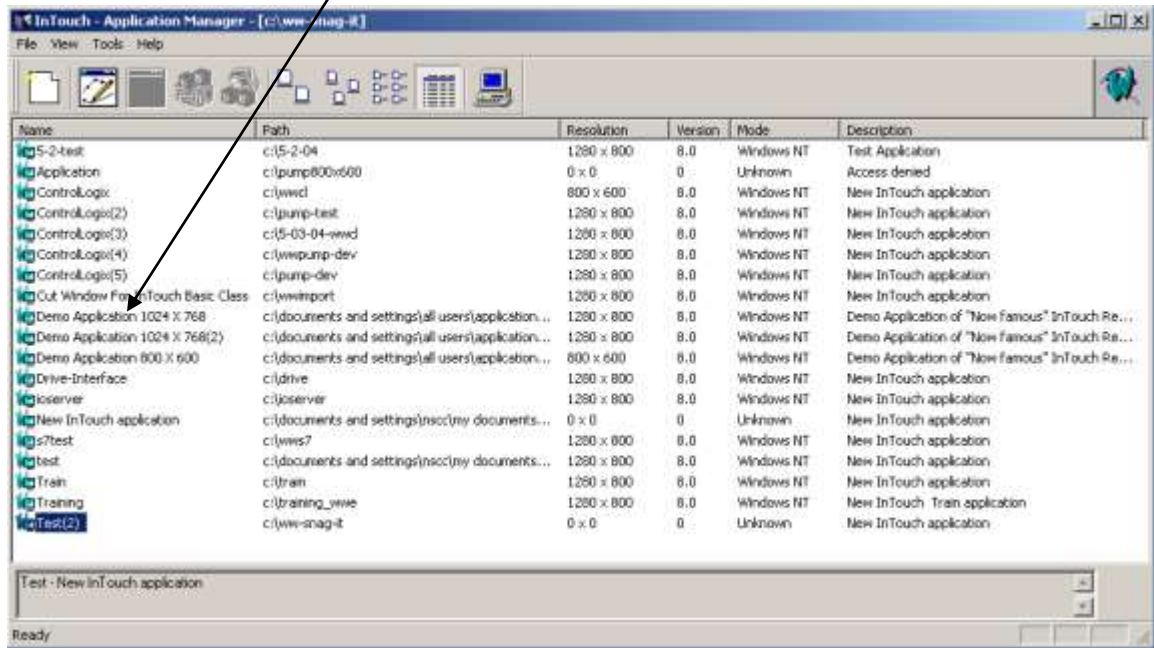


Figure 2-A

1. The WindowMaker Interface opens.

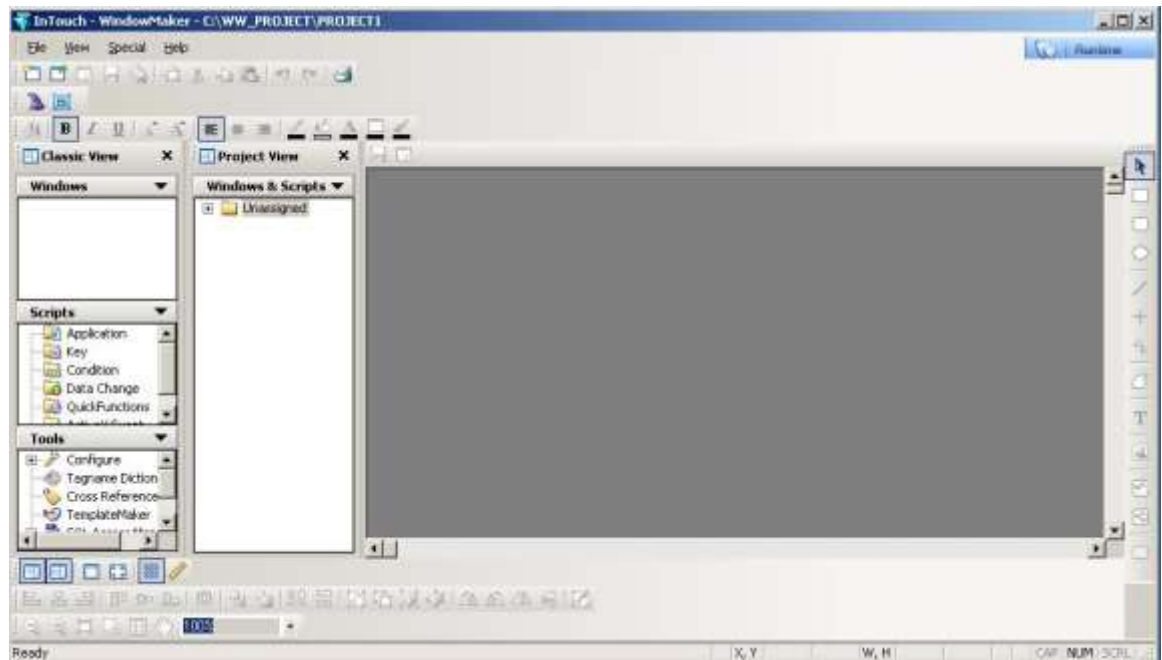


Figure 3-A

2. From Classic View, navigate to Tools -> Application -> Application Publisher.

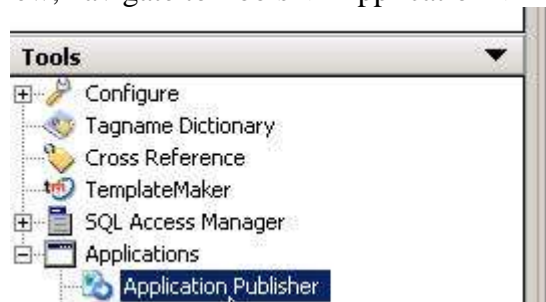


Figure 4-A

3. Double Application Publisher to open the wizard

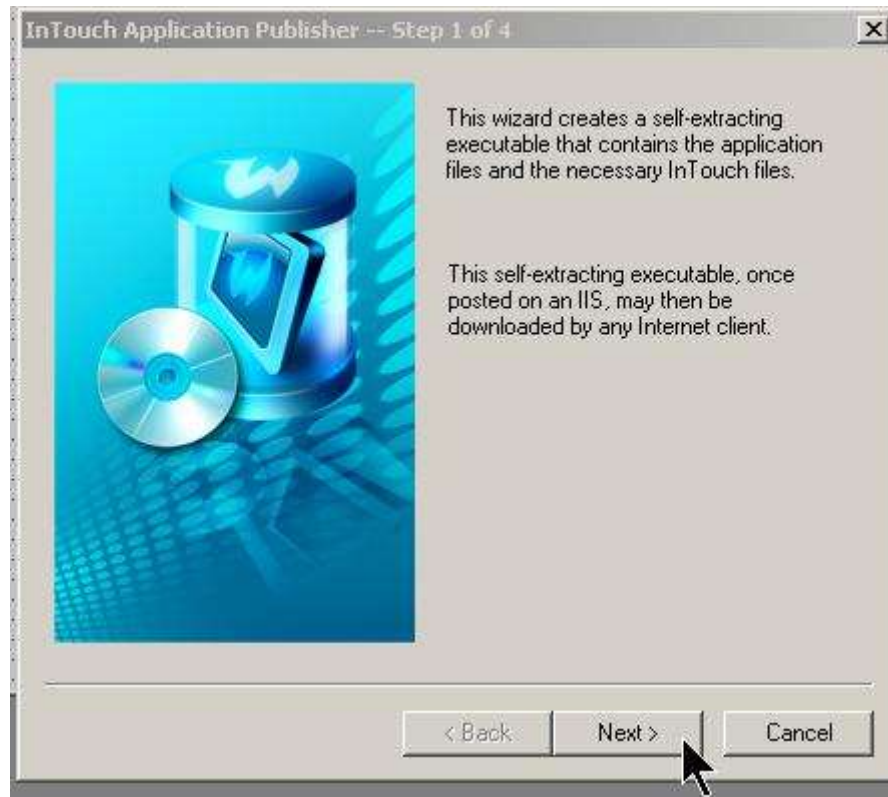


Figure 5-A

Click Next to continue

4. Fill-In information in Text boxes. Click Next to continue



Figure 6-A

3. Browse to the directory that contains the InTouch application to be published.
By default, the directory for the opened application is shown
Checkbox for Runtime only.
Note: Runtime only packages can not be modified with WindowMaker



Figure 7-A.

Click Next to continue

4. Enter name of .exe that will created.

Note: By default, the .exe name is from Step 2 – Enter Package Name text box.

Browse to the directory (folder) where the .exe file will be placed

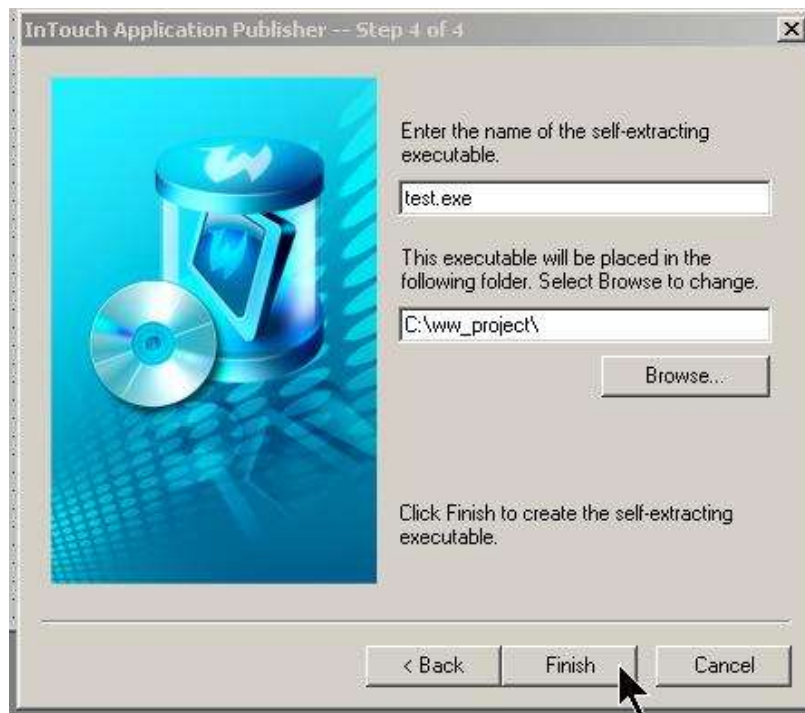


Figure 8-A

Click Finish

5. Using Windows Explorer, navigate published application's folder location

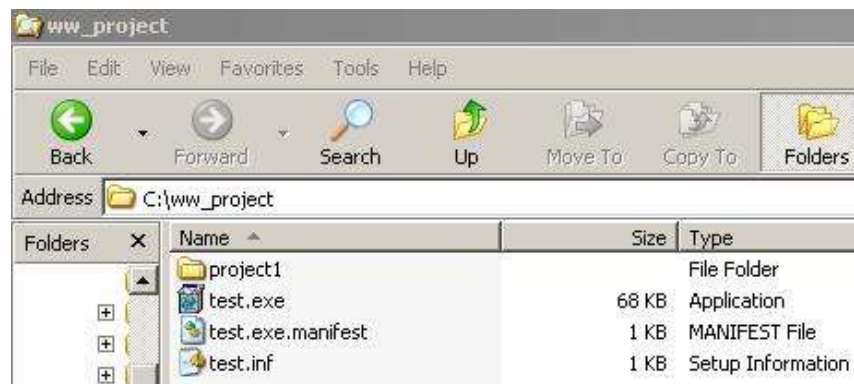


Figure 9-A

Note: .exe file with Type of Application

6. Double click the .exe file to open InTouch Application Expander window.
Browse to the directory location to place the expanded application file.
Note: InTouch lists a default location



Figure 10-A

Click Expand.

7. Navigate to directory selected on InTouch Application Expander window
(See Figure 10-A) to view expanded application files.

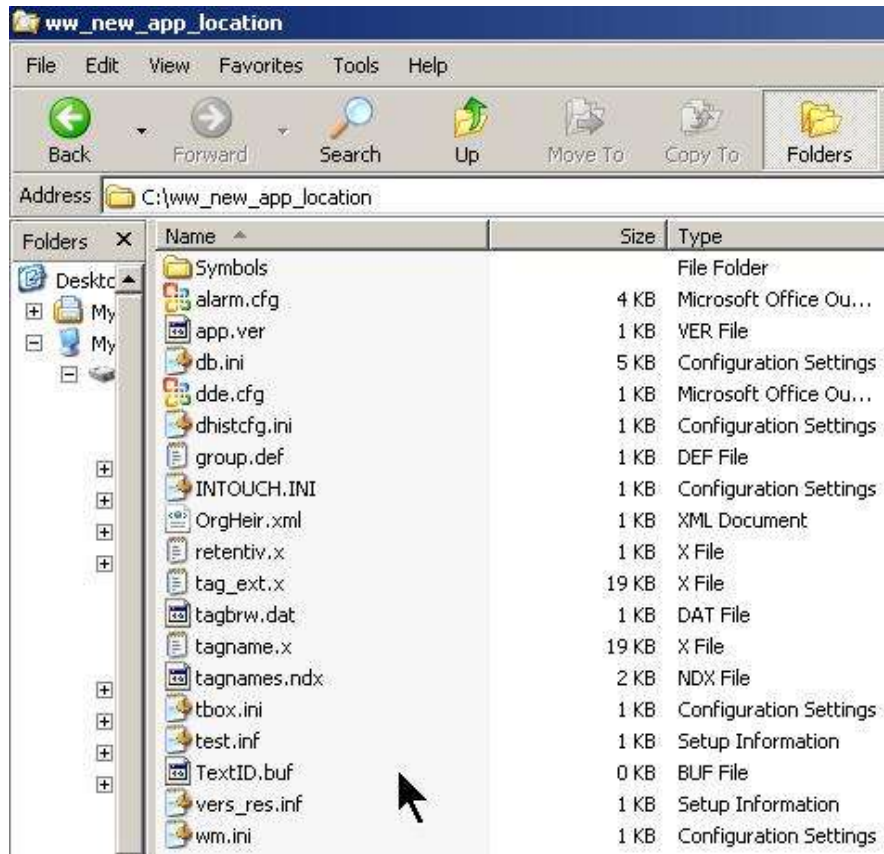


Figure 11-A

8. Open Application Manager
Click the Find icon on Application Manager Tool Bar

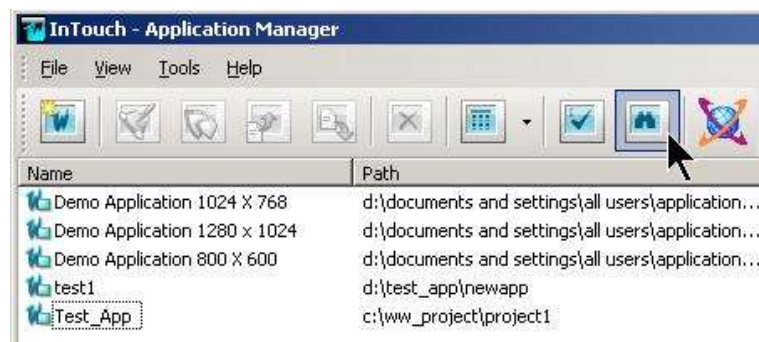


Figure 11-A

Or From the Menu Bar -> Tools -> Find Application



Figure 12-A

10. From the Browse for Folder window, choose where to browse for In Touch applications that are not already included in the Application Manager. Click OK.



Figure 13-A

11. Found application will be appended to the Application list in Application Manger.

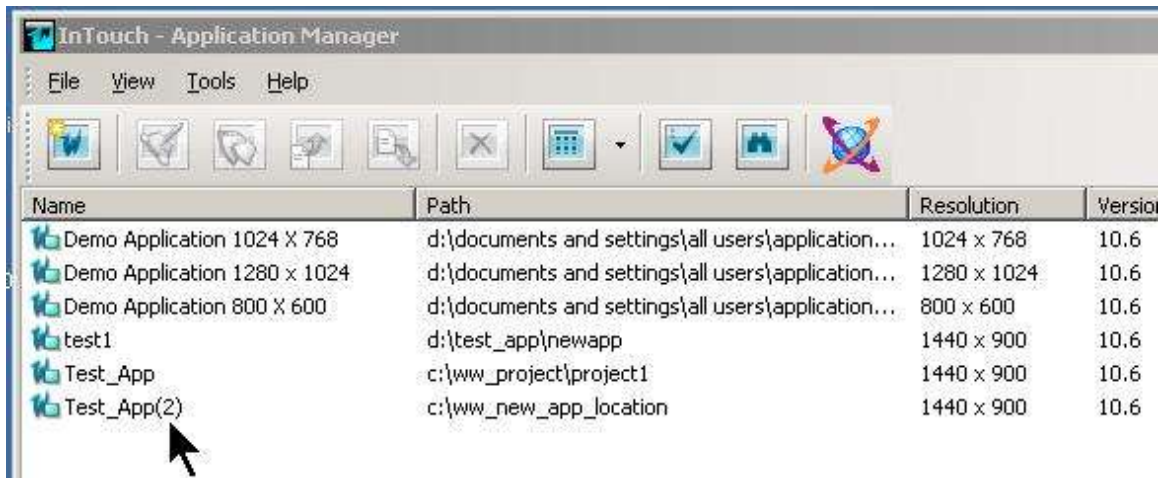


Figure 14-A

12. Open the application that was Published

Exercise for A9 Lesson

Application Publisher

The purpose of this lab is to reinforce the material taught in this lesson.

1. Use the Steps outline in Lesson A9 to Publish an InTouch application
2. Choose an application listed in Application Manager
3. Publish the Application with-out the Runtime box checked
See Figure 7-A, page 6
4. Open the application in WindowMaker
5. Publish the Application with the Runtime box checked
See Figure 7-A, page 6
6. Open the application in WindowMaker

Review Questions

1. T F Application Publisher allows an InTouch application to be move to another computer.
2. Application Publisher places which extension on the created file?
 - a) .acd
 - b) .dnt
 - c) .L5K
 - d) .exe
3. Location where the Application Publisher utility is found: .
 - a) InTouch -> Application
 - b) WindowViewer -> InTouch
 - c) WindowMaker -> Tools ->Applications
 - d) WindowMaker -> Format Toolbar
4. T F Application Publisher can create a file that cannot be modified.
5. The file created by Application Publisher is stored in which computer folder?
 - a) InTouch
 - b) Root directory \ Wonderware
 - c) Users -> InTouch
 - d) User -defined
 - e) Program Files (x86) -> ArchestrA
6. T F The file created must be stored on the same drive as the original

InTouch application.

Review Question Answers

- 1) T
- 2) d
- 3) c
- 4) T
- 5) d
- 6) F



DOL DISCLAIMER:

The document was originally created under "I AM iSTAR" a DOL funded project and used in this SCC project. "This workforce product was funded by a grant awarded by the U.S. Department of Labor's Employment and Training Administration. The product was created by the grantee and does not necessarily reflect the official position of the U.S. Department of Labor. The U.S. Department of Labor makes no guarantees, warranties, or assurances of any kind, express or implied, with respect to such information, including any information on linked sites and including, but not limited to, accuracy of the information or its completeness, timeliness, usefulness, adequacy, continued availability, or ownership. This product is copyrighted by the institution that created it."



This work is licensed under a [Creative Commons Attribution 4.0 International License](https://creativecommons.org/licenses/by/4.0/).